

Activity continues to slide

The percentage of applications made and decided continues to drop in the latest quarter

Between January and March 2013 district level planning authorities in England:

- decided 93,800 planning applications, 7% lower than in the same quarter in the previous year
- granted 77,000 permissions, 6% lower than in the same quarter in 2012
- granted 88% of applications, compared with 87% in the same quarter in 2012
- decided 1% fewer residential decisions compared to the March quarter 2012, although numbers of major decisions (10 or more dwellings) were up 7% per cent

In the year ending March 2013, district level planning authorities:

- decided 418,500 planning applications, a decrease of 4% on the year ending March 2012 figure
- granted 341,700 permissions, a decrease of 4% compared to the figure for the year to March 2012
- granted 87% of decisions, unchanged from the previous year
- decided 58% of major applications in 13 weeks compared with 57% in 2011 to 2012
- decided 68% of minor applications within 8 weeks compared with 71% in 2011 to 2012
- decided 81% of other applications in 8 weeks compared with 82% in 2011 to 2012
- decided 1% fewer residential decisions compared to 2011 to 2012, although major residential decisions were up 2%

Planning applications

In January to March 2013, authorities undertaking district level planning in England received 113,300 applications for planning permission. This represents a decrease of 6 per cent compared with the corresponding quarter in 2012. In the year ending March 2013, authorities received 454,100 planning applications, a decrease of 5 per cent compared to the year ending March 2012.

Planning decisions

In January to March 2013, authorities decided 93,800 planning applications, 7 per cent lower than in the same quarter in the previous year. In the year ending March 2013 authorities decided 418,500 planning applications, a decrease of 4 per cent compared to the year ending March 2012.

Planning decisions by development type, speed of decision and local planning authority

NOTE: A high resolution copy of these pages is at planninginlondon.com > latest issue

| Planning Authority | Total Major Decisions | Number granted | Percentage granted | Percentage within 13 weeks | Percentage of Major Developments |
|---------------------------------------|-----------------------|----------------|--------------------|----------------------------|----------------------------------|
| England | 3,516 | 3,060 | 87 | 59 | |
| Barking and Dagenham | 11 | 11 | 100 | 80 | |
| Barnet | 12 | 11 | 92 | 25 | |
| Bexley | 6 | 6 | 100 | 50 | |
| Brent | 6 | 6 | 100 | 33 | |
| Bromley | 21 | 18 | 86 | 52 | |
| Camden | 15 | 11 | 73 | 100 | |
| City of London | 14 | 14 | 100 | 79 | |
| Croydon | 20 | 18 | 90 | 30 | |
| Ealing | 15 | 13 | 87 | 67 | |
| Enfield | 11 | 11 | 100 | 30 | |
| Greenwich | 10 | 10 | 100 | 50 | |
| Hackney | 4 | 2 | 50 | 67 | |
| Hammersmith and Fulham* | 5 | 4 | 80 | 60 | |
| Haringey | 13 | 9 | 69 | 77 | |
| Harrow | 8 | 6 | 75 | 88 | |
| Havering* | 8 | 7 | 88 | 50 | |
| Hillingdon* | 17 | 15 | 88 | 35 | |
| Hounslow | 16 | 16 | 100 | 75 | |
| Islington | 4 | 4 | 100 | 67 | |
| Kensington and Chelsea | 11 | 8 | 73 | 60 | |
| Kingston upon Thames | 11 | 8 | 73 | 45 | |
| Lambeth | 10 | 7 | 70 | 38 | |
| Lewisham* | - | - | - | - | |
| London Legacy Development Corporation | 2 | 2 | 100 | 100 | |
| Merton | 6 | 6 | 100 | 33 | |
| Newham | 7 | 7 | 100 | 67 | |
| Redbridge | 7 | 7 | 100 | 29 | |
| Richmond upon Thames | 3 | 2 | 67 | 67 | |
| Southwark | 22 | 21 | 95 | 53 | |
| Sutton | 7 | 6 | 86 | 29 | |
| Tower Hamlets | 18 | 17 | 94 | 33 | |
| Waltham Forest | 6 | 5 | 83 | 50 | |
| Wandsworth | 4 | 4 | 100 | 25 | |
| Westminster | 18 | 16 | 89 | 63 | |

CLG Table P131 ... Not applicable or LA did not submit Source: <https://www.gov.uk/government/publications/planning-applications>

Applications granted

In January to March 2013, authorities granted 77,000 permissions, 6 per cent lower than in the same quarter in 2012. Authorities granted 88 per cent of all decisions, an increase of 1 percentage point when compared to the March quarter 2012. Overall, 84 per cent of major and minor decisions were granted. (see Table above for London boroughs).

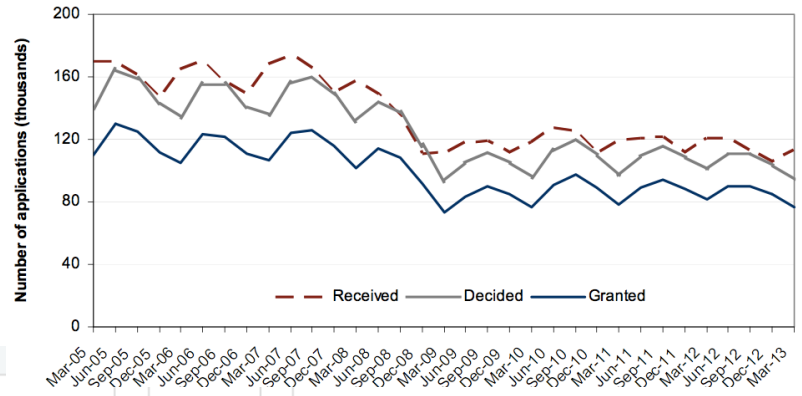
Over the 12 months to March 2013, 341,700

applications were granted, 4 per cent lower than in the year to March 2012. Authorities granted 87 per cent of all decisions in the year to March 2013, unchanged when compared to the year to March 2012. Overall, 84 per cent of major and minor decisions were granted.

Speed of decisions

In January to March 2013, 59 per cent of major applications were processed within 13 weeks,

RIGHT: Number of planning applications received, decided and granted by district level planning authorities



g authority: London, January-March 2013

| 3 weeks | Performance Agreements | | | Minor Developments | | | | | Other Developments | | | | | |
|---------|------------------------|-----------------------------------|-----------------------|--------------------|--------------------|---------------------------|-------------------------|---|-----------------------|----------------|--------------------|---------------------------|-------------------------|----|
| | Total Decisions | Decisions made within agreed time | Total Minor Decisions | Number granted | Percentage granted | Percentage within 8 weeks | Percentage over 8 weeks | Percentage of major and minor decisions | Total Other Decisions | Number granted | Percentage granted | Percentage within 8 weeks | Percentage over 8 weeks | |
| | | | | | | | | | | | | | | |
| | 41 | 100 | 88 | 27,205 | 22,883 | 84 | 68 | 32 | 84 | 63,118 | 51,024 | 90 | 82 | 18 |
| | 20 | 1 | 1 | 30 | 22 | 73 | 40 | 60 | 80 | 106 | 70 | 83 | 75 | 25 |
| | 75 | - | - | 199 | 137 | 69 | 46 | 54 | 70 | 647 | 390 | 84 | 75 | 25 |
| | 50 | - | - | 60 | 47 | 78 | 78 | 22 | 80 | 265 | 210 | 87 | 91 | 9 |
| | 67 | 2 | - | 150 | 118 | 79 | 81 | 19 | 79 | 361 | 213 | 88 | 84 | 16 |
| | 48 | - | - | 157 | 88 | 56 | 48 | 52 | 60 | 564 | 336 | 74 | 68 | 32 |
| | - | 4 | 4 | 344 | 269 | 78 | 74 | 26 | 78 | 440 | 245 | 86 | 83 | 17 |
| | 21 | - | - | 33 | 31 | 94 | 67 | 33 | 96 | 77 | 77 | 100 | 75 | 25 |
| | 70 | 5 | - | 295 | 230 | 78 | 58 | 42 | 79 | 327 | 204 | 81 | 71 | 29 |
| | 33 | - | - | 180 | 144 | 80 | 83 | 17 | 81 | 449 | 247 | 83 | 92 | 8 |
| | 70 | 1 | 1 | 102 | 78 | 76 | 63 | 37 | 79 | 380 | 262 | 86 | 85 | 15 |
| | 50 | - | - | 97 | 63 | 65 | 85 | 15 | 68 | 217 | 133 | 73 | 90 | 10 |
| | 33 | 1 | 1 | 161 | 126 | 78 | 79 | 21 | 78 | 201 | 131 | 81 | 75 | 25 |
| | 40 | - | - | 97 | 79 | 81 | 71 | 29 | 81 | 400 | 291 | 81 | 77 | 24 |
| | 23 | - | - | 73 | 48 | 66 | 52 | 48 | 66 | 451 | 250 | 75 | 63 | 37 |
| | 13 | - | - | 90 | 62 | 69 | 73 | 27 | 69 | 319 | 190 | 82 | 79 | 21 |
| | 50 | - | - | 74 | 54 | 73 | 65 | 35 | 74 | 216 | 144 | 83 | 80 | 20 |
| | 65 | 1 | - | 88 | 62 | 70 | 63 | 38 | 73 | 402 | 260 | 84 | 80 | 20 |
| | 25 | - | - | 91 | 66 | 73 | 69 | 31 | 77 | 377 | 223 | 79 | 85 | 15 |
| | 33 | 1 | 1 | 188 | 140 | 74 | 57 | 43 | 75 | 303 | 196 | 78 | 67 | 33 |
| | 40 | 1 | 1 | 326 | 256 | 79 | 76 | 24 | 78 | 637 | 425 | 76 | 76 | 24 |
| | 55 | - | - | 84 | 61 | 73 | 58 | 42 | 73 | 298 | 178 | 84 | 88 | 12 |
| | 63 | 2 | 2 | 169 | 128 | 76 | 81 | 19 | 75 | 326 | 196 | 75 | 86 | 14 |
| | - | - | - | 171 | 140 | 82 | 72 | 28 | 82 | 197 | 118 | 82 | 78 | 22 |
| | - | - | - | 12 | 12 | 100 | 67 | 33 | 100 | 9 | 7 | 78 | 33 | 67 |
| | 67 | - | - | 62 | 46 | 74 | 63 | 37 | 76 | 350 | 209 | 83 | 80 | 20 |
| | 33 | 4 | 4 | 81 | 55 | 68 | 85 | 15 | 70 | 184 | 67 | 62 | 91 | 9 |
| | 71 | - | - | 89 | 68 | 76 | 30 | 70 | 78 | 375 | 231 | 86 | 47 | 53 |
| | 33 | - | - | 194 | 162 | 84 | 75 | 25 | 83 | 609 | 403 | 85 | 81 | 19 |
| | 47 | 5 | 5 | 158 | 130 | 82 | 72 | 28 | 84 | 228 | 141 | 85 | 88 | 12 |
| | 71 | - | - | 68 | 58 | 85 | 65 | 35 | 85 | 205 | 147 | 94 | 89 | 11 |
| | 67 | - | - | 145 | 129 | 89 | 69 | 31 | 90 | 164 | 114 | 81 | 71 | 29 |
| | 50 | - | - | 88 | 52 | 59 | 84 | 16 | 61 | 177 | 89 | 77 | 90 | 10 |
| | 75 | - | - | 327 | 299 | 91 | 74 | 26 | 92 | 496 | 386 | 95 | 81 | 19 |
| | 38 | 2 | 2 | 669 | 575 | 86 | 70 | 30 | 86 | 1,045 | 875 | 87 | 70 | 30 |

s-in-england. Latest update: January 2013. Next update: September 2013

compared with 53 per cent in the March 2012 quarter. Also, 68 per cent of minor applications and 82 per cent of other applications were processed within 8 weeks, compared with 68 per cent and 81 per cent respectively for the quarter ending March 2012.

District level planning authorities decided 52 per cent of large-scale major applications, and 60 per cent of small-scale major applications within 13 weeks compared with 46 per cent and 55 per

cent respectively for the quarter ending March 2012. Also, 92 per cent of all major decisions were processed within 52 weeks compared to 89 per cent in the corresponding quarter of the previous year.

In the year ending March 2013, 58 per cent of major applications were processed within 13 weeks, unchanged compared with the figure for the year ending March 2012.

Also, 68 per cent of minor applications and 81 per cent of other applications were processed

within 8 weeks compared with 71 per cent and 82 per cent respectively in the year ending March 2012. District level planning authorities decided 51 per cent of large-scale major applications, and 60 per cent of small-scale major applications within 13 weeks compared with 49 per cent and 60 per cent respectively in the year ending March 2012. Also 91 per cent of all major decisions were within 52 weeks, unchanged compared to the previous year. ■