

Performance: steady as it goes

Publication of planning performance statistics is catching up to its previous quarterly pace. They show little change on a year earlier

Planning applications

In October to December 2011, authorities undertaking district level planning in England received 111,500 applications for planning permission. This represents an increase of 1 per cent compared with the corresponding quarter in 2010. In the year ending December 2011, authorities received 472,800 applications, a decrease of 2 per cent on the year ending December 2010 figure.

Planning decisions

In October to December 2011 authorities decided 108,600 planning applications, 1 per cent lower than in the same quarter in the previous year. In the year ending December 2011 authorities decided 430,700 planning applications, a decrease of 2 per cent on the year ending December 2010 figure.

Applications granted

In October to December 2011, authorities granted 88,700 permissions, a slight decrease on the figure of 89,000 permissions granted in the same quarter in 2010. Authorities granted 87 per cent of all decisions, an increase of 1 percentage point when compared with the December quarter 2010. Overall, 85 per cent of major and minor decisions were granted. (Tables P121 and P131 – opposite for London). Overall, 84 per cent of major and minor decisions were granted.

Speed of applications

In October to December 2011, 58 per cent of major applications were processed within 13 weeks compared with 65 per cent in the December 2010 quarter. Also, 70 per cent of minor applications and 82 per cent of other applications were processed within 8 weeks compared with 74 per cent and 85 per cent respectively for the quarter ending December 2010. In the first quarter of 2011 the percentage of major applications processed within 13 weeks stood at 62 per cent – after rising to 63 per cent in the second quarter it then fell 5 percentage points to 58 per cent in the third and fourth quarters. Overall, since the second quarter of 2010 this indicator has fallen 12 percentage points from 70 per cent to 58 per cent.

In the quarter ending December 2011, district level planning authorities decided 46 per cent of large-scale major applications, and 61 per cent of

Planning decisions by development type, speed of decision and local planning authority: London, October to December 2011

Planning Authority	Major Developments					Minor Developments					Other Developments							
	Total Major Decisions	Number granted	Percentage granted	Percentage within 13 weeks	Percentage over 13 weeks	Performance Agreements		Total Minor Decisions	Number granted	Percentage granted	Percentage within 8 weeks	Percentage over 8 weeks	Percentage of major and minor decisions granted	Total Other Decisions	Number granted	Percentage granted	Percentage within 8 weeks	Percentage over 8 weeks
						Total Decisions	Decisions made within agreed time limit											
London	327	280	86	46	54	13	10	5,684	4,536	80	66	34	80	13,031	8,499	81	77	23
Barking and Dagenham	-	-	-	-	-	-	-	38	27	71	63	37	71	126	89	83	78	22
Barnet	4	4	100	50	50	-	-	196	156	80	54	46	80	598	392	87	63	37
Bexley	4	4	100	75	25	-	-	70	55	79	79	21	80	279	215	86	91	9
Brent	9	8	89	25	75	2	1	160	129	81	73	28	81	482	273	78	81	19
Bromley	-	-	-	-	-	-	-	-	-	-	-	-	-	-	-	-	-	-
Camden	-	-	-	-	-	-	-	-	-	-	-	-	-	-	-	-	-	-
City of London	3	3	100	-	100	-	-	58	57	98	31	69	98	62	58	97	48	52
Croydon	7	5	71	29	71	-	-	268	201	75	76	24	75	348	218	81	90	10
Ealing	7	6	86	29	71	-	-	196	142	72	86	14	73	529	273	72	91	9
Enfield	5	4	80	40	80	-	-	96	66	69	61	39	69	379	248	82	87	13
Greenwich	11	10	91	73	27	-	-	120	98	82	89	11	82	257	170	81	96	4
Hackney	11	9	82	60	40	1	1	155	107	69	89	11	70	237	122	67	88	12
Hammersmith and Fulham	-	-	-	-	-	-	-	-	-	-	-	-	-	-	-	-	-	-
Haringey	4	4	100	-	100	-	-	83	44	70	78	22	72	442	300	82	73	27
Harrow	11	10	91	82	18	-	-	137	86	63	72	28	65	569	241	56	82	16
Havering	10	9	90	50	50	-	-	125	100	80	78	22	81	384	260	81	79	21
Hillingdon	23	18	78	52	48	-	-	139	96	69	63	37	70	478	241	64	85	15
Hounslow	12	10	83	17	83	-	-	86	72	84	40	60	84	405	250	79	70	30
Islington	9	8	89	22	78	-	-	251	198	79	46	54	79	332	234	79	56	44
Kensington and Chelsea	2	2	100	-	100	-	-	267	217	81	50	50	81	536	385	84	53	47
Kingston upon Thames	2	1	50	-	100	-	-	72	53	74	78	22	73	274	185	82	93	7
Lambeth	20	19	95	20	80	-	-	198	156	79	42	58	80	297	185	82	52	48
Lewisham	-	-	-	-	-	-	-	-	-	-	-	-	-	-	-	-	-	-
London Thames Gateway	1	1	100	-	-	1	1	1	1	100	-	100	100	-	-	-	-	-
Merton	11	10	91	64	36	-	-	82	55	67	71	29	70	417	260	83	86	14
Newham	2	2	100	50	50	-	-	109	73	67	92	8	68	180	91	71	97	3
Redbridge	17	15	88	29	71	-	-	119	105	88	25	75	88	462	288	83	46	54
Richmond upon Thames	1	1	100	-	100	-	-	268	208	78	71	29	78	639	392	81	81	19
Southwark	24	17	71	58	42	2	-	230	206	90	73	27	88	302	192	82	81	19
Sutton	5	4	80	100	-	-	-	63	51	81	67	33	81	226	153	84	81	19
Tower Hamlets	22	19	86	27	73	-	-	223	197	88	60	40	88	153	123	89	57	43
Waltham Forest	-	-	-	-	-	-	-	-	-	-	-	-	-	-	-	-	-	-
Wandsworth	11	10	91	45	55	-	-	290	267	92	62	38	92	550	410	92	81	19
Westminster	23	20	87	67	31	5	5	705	617	88	69	31	88	1,195	1,048	91	76	24

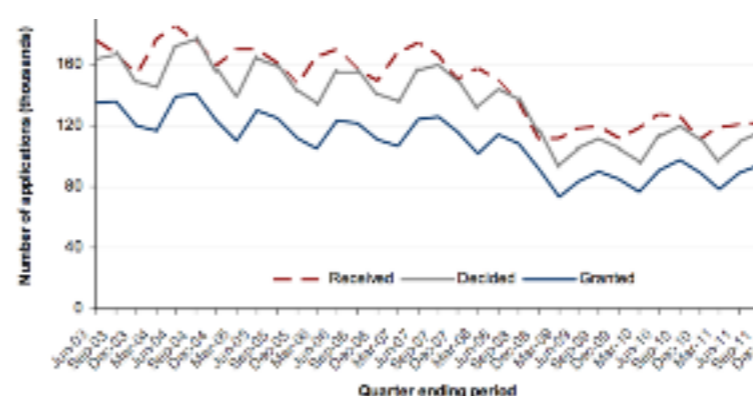
CLG Table P131 ...Not applicable or LA did not submit Source: Planning.statistics@communities.gsi.gov.uk General Development Control (District) PSF returns. Latest update: Apr 2012. Next update: July 2012

small-scale major applications within 13 weeks compared with 61 per cent and 66 per cent respectively for the quarter ending December 2010. Also, 91 per cent of all major decisions were within 52 weeks compared to the figure of 92 per cent in the corresponding quarter of the previous year.

In the year ending December 2011, 60 per cent of major applications were processed within 13 weeks, compared with 68 per cent in the year ending December 2010. Also, 71 per cent of

minor applications and 83 per cent of other applications were processed within 8 weeks compared with 76 per cent and 86 per cent respectively.

In the year ending December 2011, district level planning authorities decided 52 per cent of large-scale major applications, and 62 per cent of small-scale major applications within 13 weeks compared with 60 per cent and 70 per cent respectively in the year ending December 2010. Also 92 per cent of all major decisions were within 52 weeks, unchanged from the previous year. ■



Number of planning applications received, decided and granted by district level planning authorities