

# Activity continues to slide

The number of applications made begins to rise in the latest quarter

## Between April and June 2013 district level planning authorities in England:

- decided 109,900 planning applications, 1% lower than in the same quarter in the previous year
- granted 90,900 permissions, 1% higher than in the same quarter in 2012
- granted 89% of applications, compared with 88% in the same quarter in 2012
- decided 11% more residential decisions compared to the June quarter 2012, with numbers of major decisions (10 or more dwellings) up by 45%

In the year ending June 2013, district level planning authorities:

- decided 418,600 planning applications, a decrease of 4% compared to the figure for the year to June 2012
- granted 343,000 permissions, a decrease of 4% compared to the figure for the year to June 2012
- granted 88% of decisions, an increase of 1% when compared to the previous year
- decided 59% of major applications in 13 weeks compared with 57% in the previous year
- decided 68% of minor applications and 82% of others in 8 weeks compared with 70% and 82% respectively in the previous year
- decided 2% more residential decisions compared to the previous year, with major residential decisions up by 14%

## Planning applications

In April to June 2013, authorities undertaking district level planning in England received 124,300 applications for planning permission. This represents an increase of 3 per cent compared with the corresponding quarter in 2012. In the year ending June 2013, authorities received 458,000 planning applications, a decrease of 4% compared to the year ending June 2012.

## Planning decisions

In April to June 2013, authorities decided 109,900 planning applications, 1 per cent lower than in the same quarter in the previous year. In the year ending June 2013 authorities decided 418,600 planning applications, a decrease of 4% compared to the year ending June 2012.

## Applications granted

In April to June 2013, authorities granted

Planning decisions by development type, speed of decision and local planning

Planning Authority	Total Major Decisions	Number granted	Percentage granted	Major Developments	
				Percentage within 13 weeks	Percentage over 13 weeks
<b>England</b>	<b>3,518</b>	<b>3,060</b>	<b>87</b>	<b>59</b>	
Barking and Dagenham	11	11	100	80	
Barnet	12	11	92	25	
Bexley	6	6	100	50	
Brent	8	6	100	33	
Bromley	21	18	86	52	
Camden	15	11	73	100	
City of London	14	14	100	79	
Croydon	20	18	90	30	
Ealing	15	13	87	67	
Enfield	11	11	100	30	
Greenwich	10	10	100	50	
Hackney	4	2	50	67	
Hammersmith and Fulham*	5	4	80	60	
Haringey	13	9	69	77	
Harrow	8	6	75	88	
Havering*	8	7	88	50	
Hillingdon*	17	15	88	35	
Hounslow	16	16	100	75	
Islington	4	4	100	67	
Kensington and Chelsea	11	8	73	60	
Kingston upon Thames	11	8	73	45	
Lambeth	10	7	70	38	
Lewisham*	-	-	-	-	
London Legacy Development Corporation	2	2	100	100	
Merton	6	6	100	33	
Newham	7	7	100	67	
Redbridge	7	7	100	29	
Richmond upon Thames	3	2	67	67	
Southwark	22	21	95	53	
Sutton	7	6	86	29	
Tower Hamlets	18	17	94	33	
Waltham Forest	6	5	83	50	
Wandsworth	4	4	100	25	
Westminster	18	16	89	63	

CLG Table P131 ... Not applicable or LA did not submit Source: <https://www.gov.uk/government/statistical-data-sets/live-tables>

90,900 permissions, 1 per cent higher than in the same quarter in 2012. Authorities granted 89 per cent of all decisions, an increase of 1 percentage point when compared to the June quarter 2012. Overall, 85 per cent of major and minor decisions were granted. (Table P131, ABOVE)

Over the 12 months to June 2013, 343,000 applications were granted, 4 per cent lower than in the year to June 2012. Authorities granted 88 per

cent of all decisions in the year to June 2013, an increase of 1 percentage point when compared to the year to June 2012. Overall, 84 per cent of major and minor decisions were granted.

## Speed of decisions

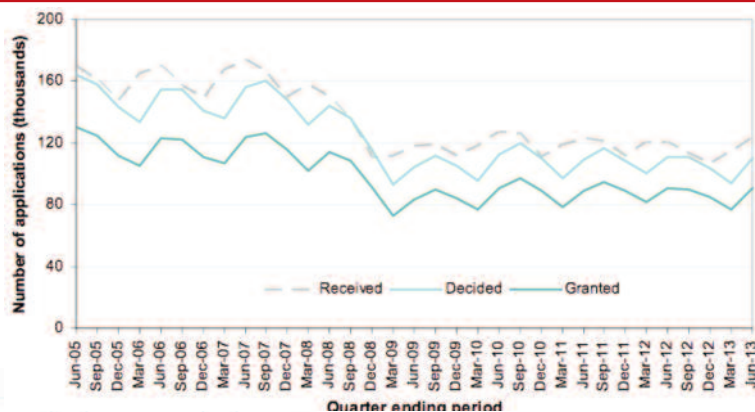
In April to June 2013, 63 per cent of major applications were processed within 13 weeks, compared with 60 per cent in the June quarter

## \*NOTE

DCLG HAS, AT THE TIME OF UPDATING THE TABLE BELOW, RELEASED THEIR TEXT SUMMARY FOR THE JUNE QUARTER. PLEASE GO TO THE FOOTNOTE FOR THE LATEST INFORMATION THAT IT BECOMES AVAILABLE.

... GOING TO PRESS, NOT  
... W DESPITE HAVING  
... MMARY FOR THE APRIL-  
... O TO THE LINK IN THE  
... ST TABLE IN THE HOPE  
... LE.

RIGHT: Number of  
planning applications  
received, decided and  
granted by district  
level planning  
authorities



... ng authority: London, JANUARY-MARCH\* 2013

... 13 weeks	Minor Developments							Other Developments						
	Total Decisions	Decisions made within agreed time	Total Minor Decisions	Number granted	Percentage granted	Percentage within 8 weeks	Percentage over 8 weeks	Percentage of major and minor decisions	Total Other Decisions	Number granted	Percentage granted	Percentage within 8 weeks	Percentage over 8 weeks	
41	100	88	27,205	22,883	84	68	32	84	69,118	51,024	90	82	18	
20	1	1	30	22	73	40	60	80	106	70	83	75	25	
75	-	-	189	137	69	46	54	70	647	390	84	75	25	
50	-	-	60	47	78	78	22	80	265	210	87	91	9	
67	2	-	150	118	79	81	19	79	361	213	88	84	16	
48	-	-	157	88	56	48	52	60	564	336	74	68	32	
-	4	4	344	269	78	74	26	78	440	245	86	83	17	
21	-	-	33	31	94	67	33	96	77	77	100	75	25	
70	5	-	295	230	78	58	42	79	327	204	81	71	29	
33	-	-	180	144	80	83	17	81	449	247	83	92	8	
70	1	1	102	78	76	83	37	79	380	262	86	85	15	
50	-	-	97	63	65	85	15	68	217	133	73	90	10	
33	1	1	161	126	78	79	21	78	201	131	81	75	25	
40	-	-	97	79	81	71	29	81	400	291	81	77	24	
23	-	-	73	48	66	52	48	66	451	250	75	63	37	
13	-	-	90	62	69	73	27	69	319	190	82	79	21	
50	-	-	74	54	73	65	35	74	216	144	83	80	20	
65	1	-	88	62	70	63	38	73	402	260	84	80	20	
25	-	-	91	66	73	69	31	77	377	223	79	85	15	
33	1	1	188	140	74	57	43	75	303	196	78	67	33	
40	1	1	326	256	79	76	24	78	637	425	76	76	24	
55	-	-	84	61	73	58	42	73	298	178	84	88	12	
63	2	2	169	128	76	81	19	75	326	198	75	86	14	
-	-	-	171	140	82	72	28	82	197	118	82	78	22	
-	-	-	12	12	100	67	33	100	9	7	78	33	67	
67	-	-	62	46	74	63	37	76	350	209	83	80	20	
33	4	4	81	55	68	85	15	70	184	67	62	91	9	
71	-	-	89	68	76	30	70	78	375	231	86	47	53	
33	-	-	194	162	84	75	25	83	609	403	85	81	19	
47	5	5	158	130	82	72	28	84	228	141	85	88	12	
71	-	-	68	58	85	65	35	85	205	147	94	89	11	
67	-	-	145	129	89	89	31	90	164	114	81	71	29	
50	-	-	88	52	59	84	16	61	177	89	77	90	10	
75	-	-	327	299	91	74	26	92	496	386	95	81	19	
38	2	2	669	575	86	70	30	86	1,045	875	87	70	30	

... on-planning-application-statistics. Latest update: September 2013. Next update: December 2013

2012. Also, 70 per cent of minor applications and 83 per cent of other applications were processed within 8 weeks, compared with 69 per cent and 82 per cent respectively for the quarter ending June 2012.. District level planning authorities decided 57 per cent of large-scale major applications, and 64 per cent of small-scale major applications within 13 weeks compared with 52 per cent and 61 per cent respectively for the quarter ending June 2012.

Also, 90 per cent of all major decisions were within 52 weeks compared to 91 per cent in the corresponding quarter of the previous year.

In the year ending June 2013, 59 per cent of major applications were processed within 13 weeks, compared with 57 per cent in the year ending June 2012. Also, 68 per cent of minor applications and 82 per cent of other applications were processed within 8 weeks compared with 70 per

cent and 82 per cent respectively in the year ending June 2012. District level planning authorities decided 53 per cent of large-scale major applications, and 60 per cent of small-scale major applications within 13 weeks compared with 48 per cent and 59 per cent respectively in the year ending June 2012. Also 91 per cent of all major decisions were within 52 weeks, unchanged compared to the previous year. ■